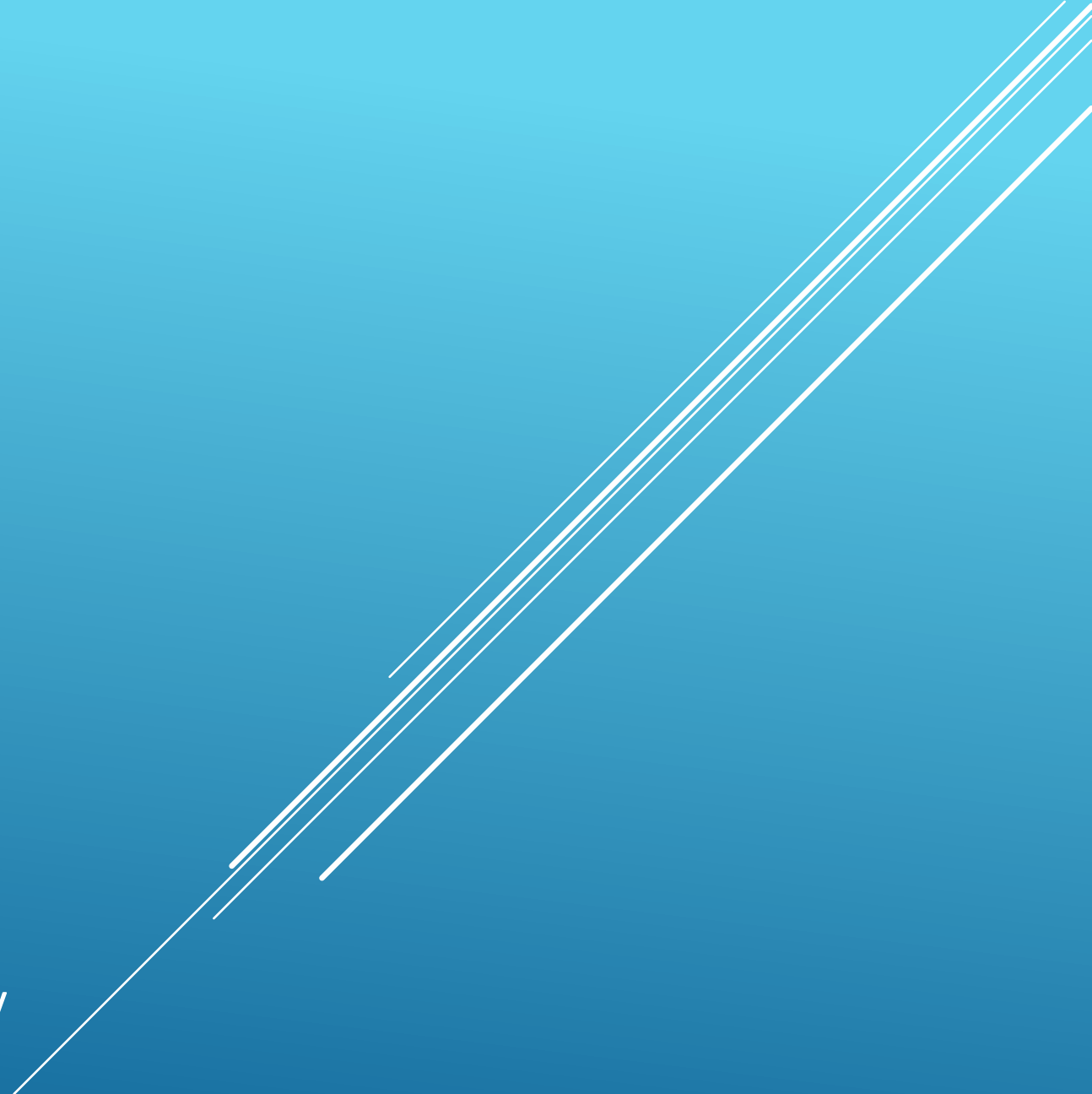


# PORTRAITURE



Bob Cook, Photographer

Copyright 2023, studioeleven Photography



# WHAT'S IN STORE ?

- Examples
  - Equipment
  - Models
  - Posing Models
  - Available light
  - Studio light
- 
- A decorative graphic consisting of several parallel white lines of varying thicknesses, slanted diagonally from the bottom-left towards the top-right, located on the right side of the slide.

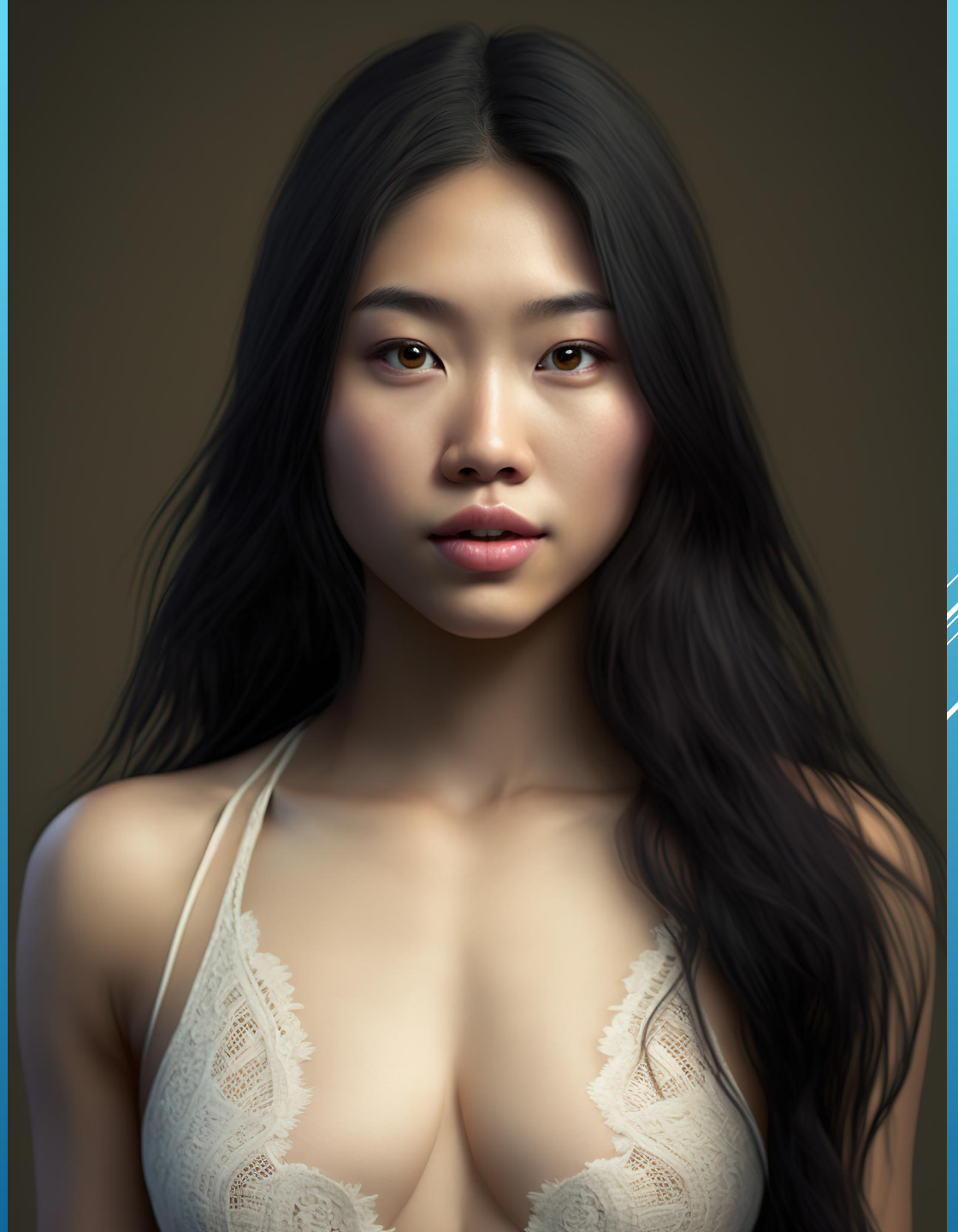
# WHAT'S IN STORE ?

- Examples
  - Equipment
  - Models
  - Posing Models
  - Available light
  - Studio light
- 
- A series of several parallel white lines of varying thicknesses, starting from the bottom left and extending diagonally towards the top right, creating a sense of motion and depth.

# EXAMPLES 1



# EXAMPLES 2





# EXAMPLES 3



# EXAMPLES 4



# EXAMPLES 5





# EXAMPLES 6



# EXAMPLES 7



# CREDITS

Photographer: Malcolm Fackender, Spotlight on Asia

Models: Various

Software: Midjourney via Discord <https://discord.com/invite/midjourney>

**These images were totally generated by Artificial Intelligence (AI) from text specifications entered by Malcolm.**

**e.g. Full length epic portrait, exquisite detail, 30 Mpx, 4k, 85 mm lens, Sharp, diffuse back lighting, award-winning photo, facing camera, small catchlight, facial symmetry, .....**



BUT, ENOUGH OF THE FOOLING ...

Back to the  
practical  
presentation





# WHAT'S IN STORE ?

- Examples
  - Equipment
  - Models
  - Posing Models
  - Available light
  - Studio light
- 
- A decorative graphic consisting of several parallel white lines of varying thicknesses, slanted diagonally from the bottom-left towards the top-right, located on the right side of the slide.

# EQUIPMENT

Key Light.

Back Light.

Fill Light.

Hair Light.

Strip Lights.

Effects Lights.

**In addition, lights can be modified by the use of:**

Reflectors.

Absorbers.

Flags.

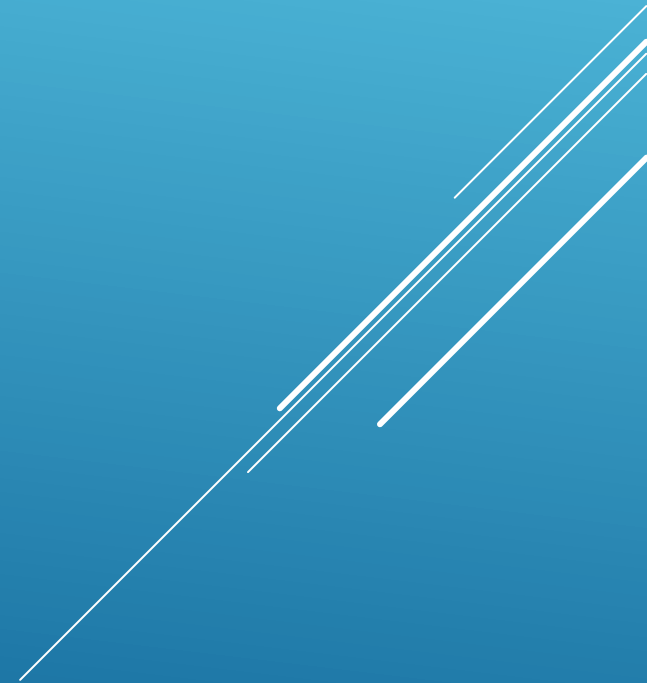
Scrim.

Barn doors.

Snoots.

Gobos.

Filters (or Gels)



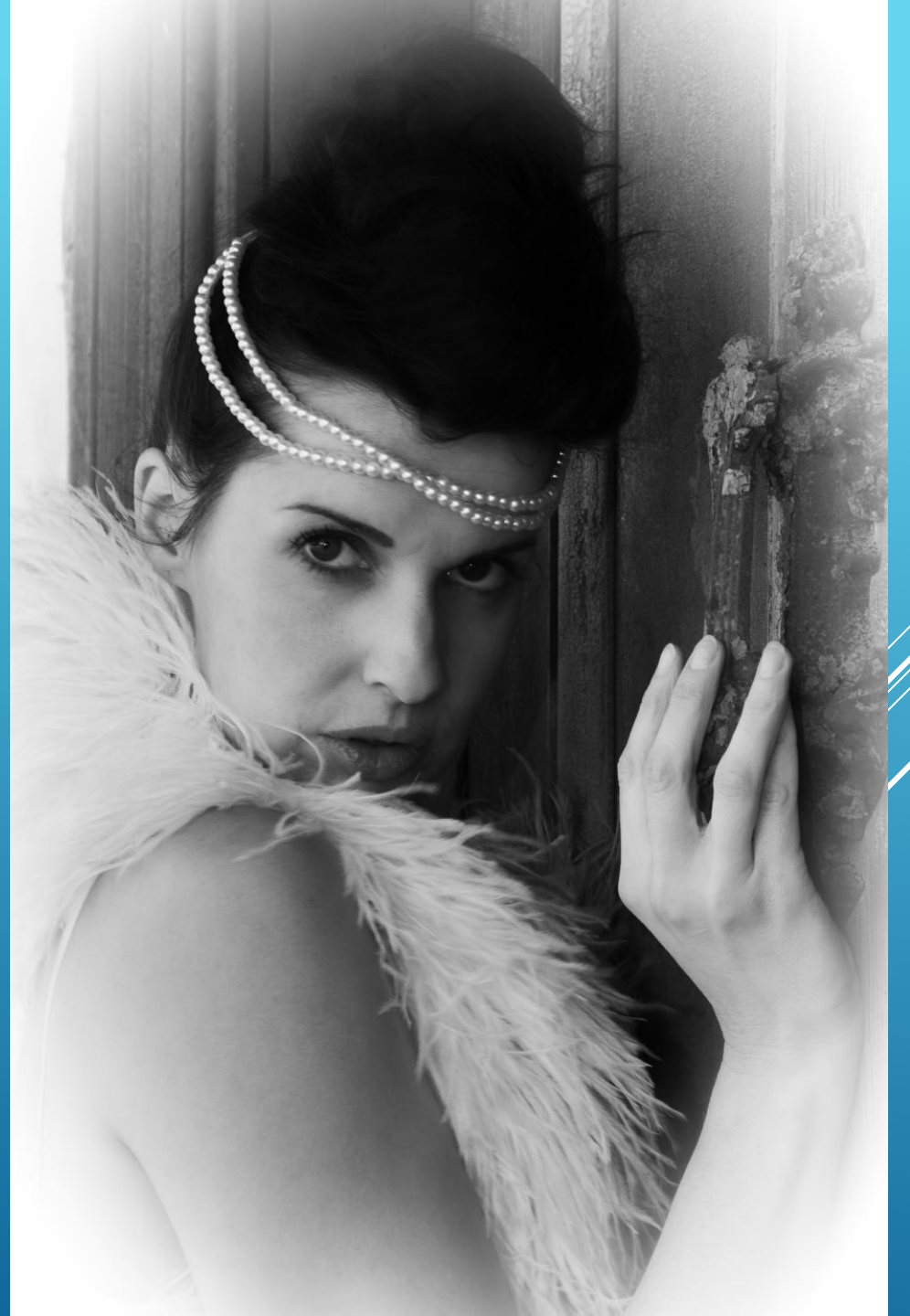
# WHAT'S IN STORE ?

- Examples
  - Equipment
  - Models
  - Posing Models
  - Available light
  - Studio light
- 
- A decorative graphic consisting of several parallel white lines of varying thicknesses, slanted diagonally from the bottom-left towards the top-right, located on the right side of the slide.

# MODELS

## The Rules:

- Treat as a person
- Call them by their name
- Respect
- Manners
- Collaborate
- No touching without permission





# WHAT'S IN STORE ?

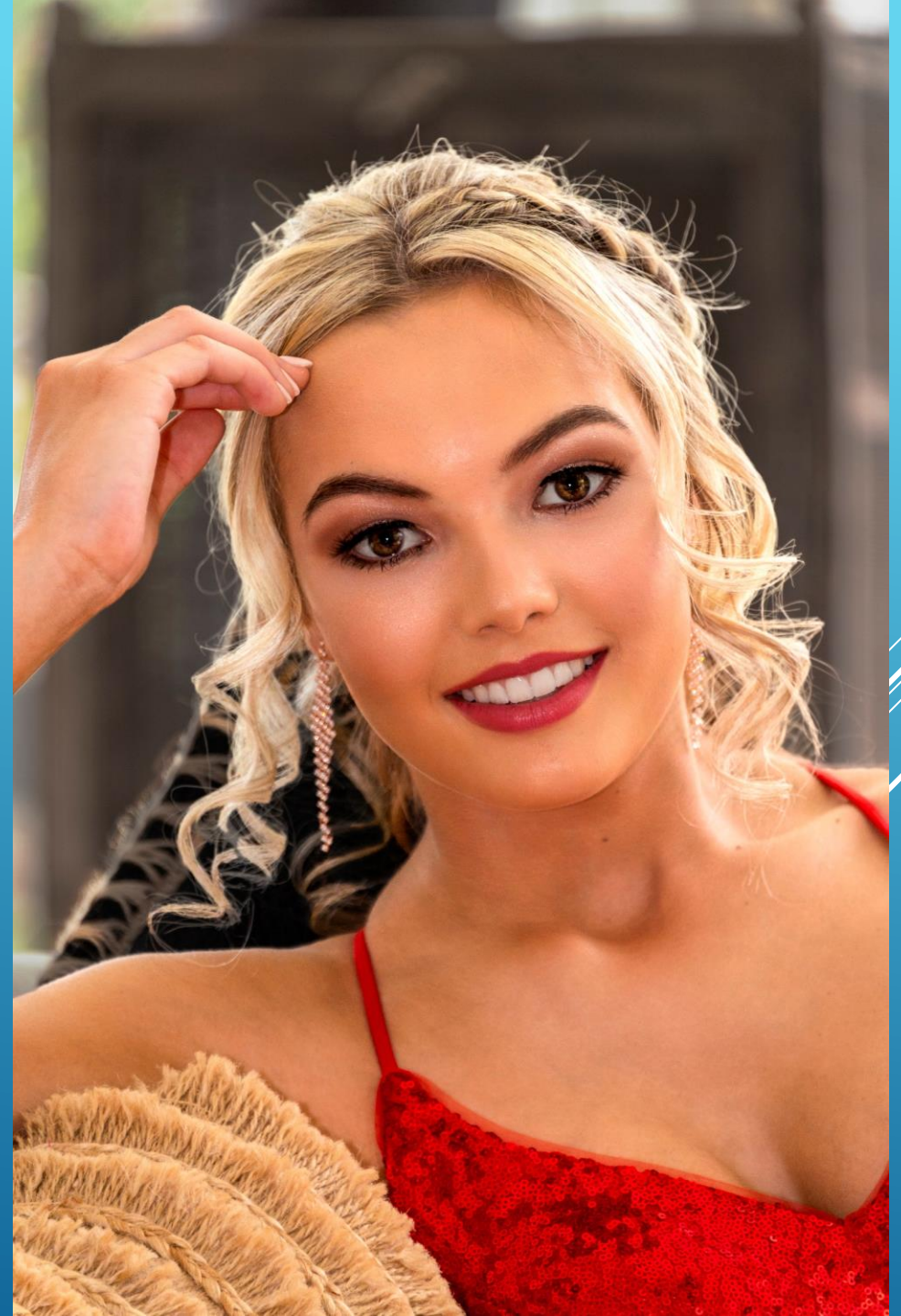
- Examples
  - Equipment
  - Models
  - Posing Models
  - Available light
  - Studio light
- 
- A series of several parallel white lines that originate from the bottom left and extend diagonally towards the top right, creating a sense of movement and depth on the blue background.

# MODELS

Tonight, I am pleased to introduce our model.

Please welcome Lara

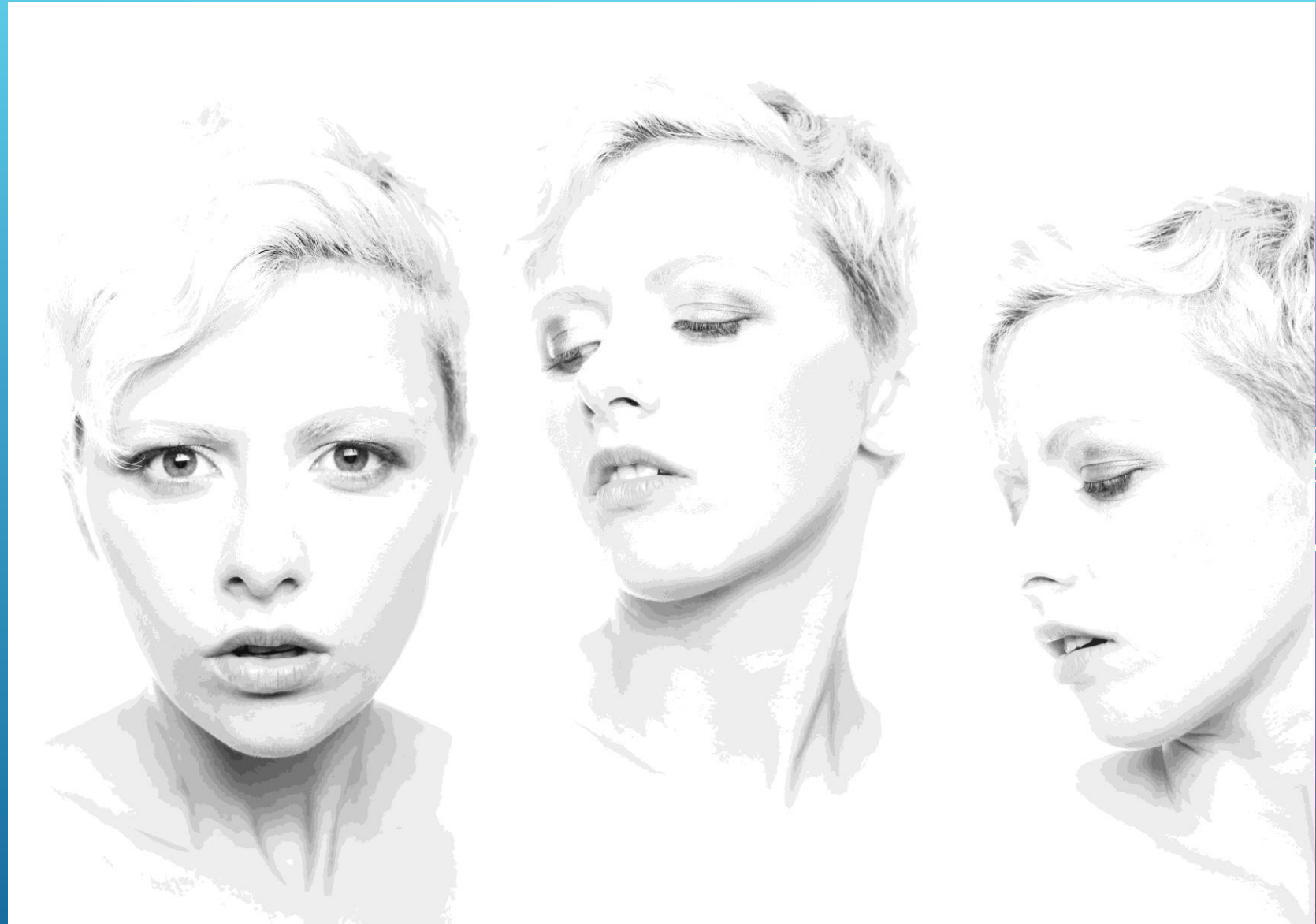
All the way from the Blue Mountains



# POSING

Things to watch out for:

- Hands
- Feet
- Curves
- Eyes
- Smiles, or not
- Cropping

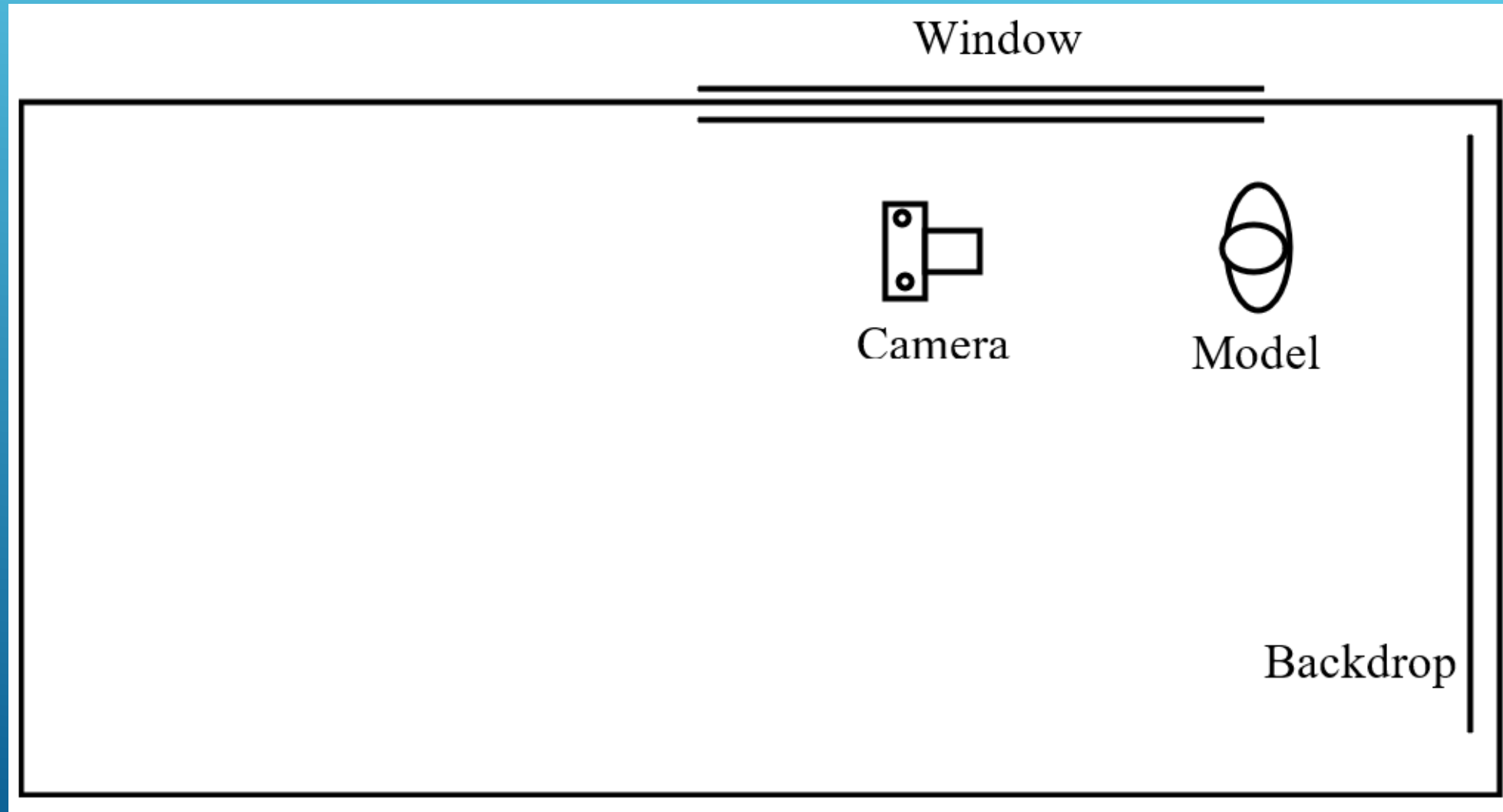


# WHAT'S IN STORE ?

- Examples
  - Equipment
  - Models
  - Posing Models
  - Available light
  - Studio light
- 
- A decorative graphic consisting of several parallel white lines of varying thicknesses, slanted diagonally from the bottom-left towards the top-right, located on the right side of the slide.



# AVAILABLE LIGHT 1

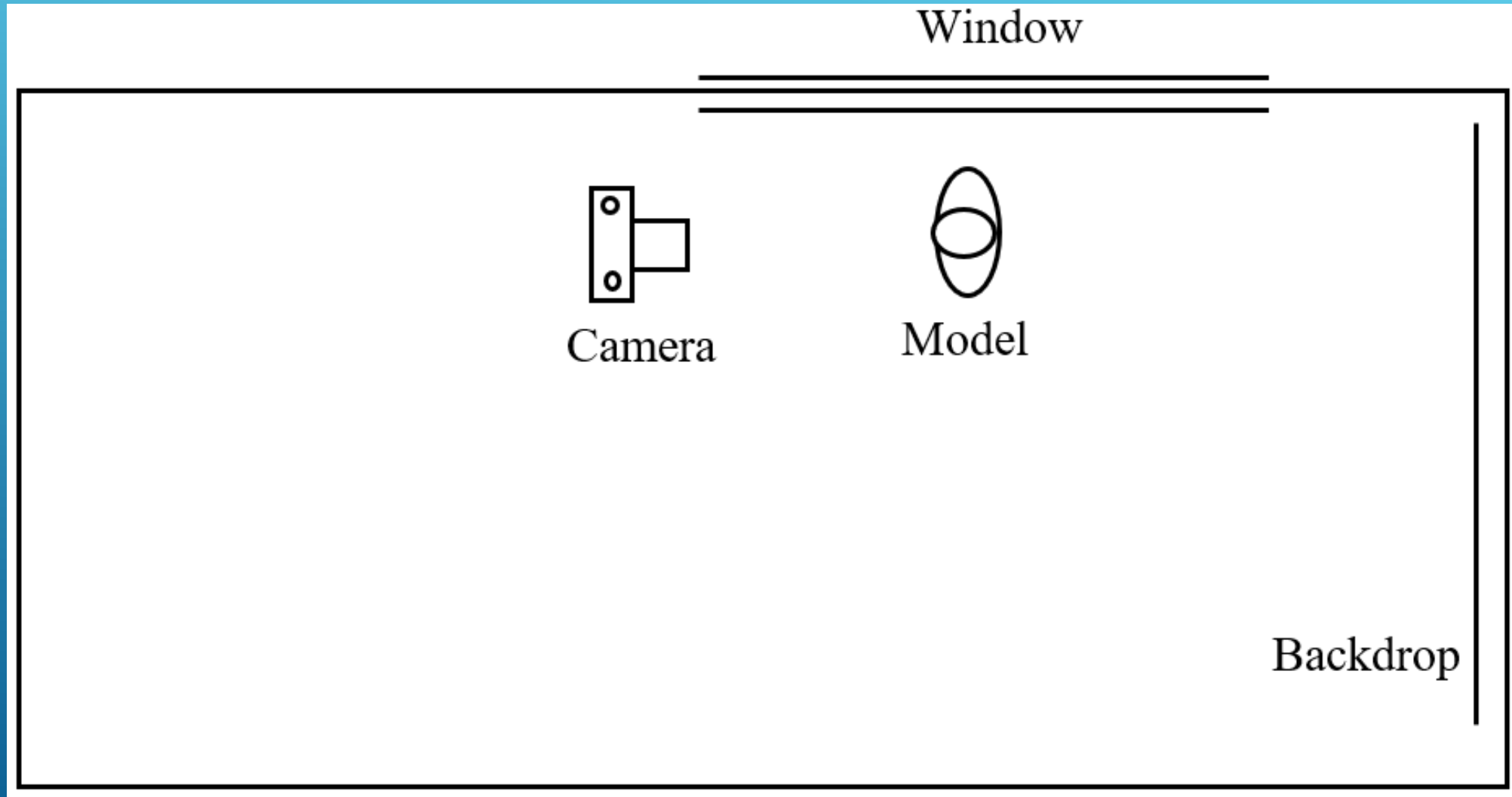


# AVAILABLE LIGHT 1

- Model 50 cm from window
- 1/50 @ f3.5
- ISO 1000
- 50 mm lens,
- White backdrop.
- WB on Cloudy
- AV mode



# AVAILABLE LIGHT 2



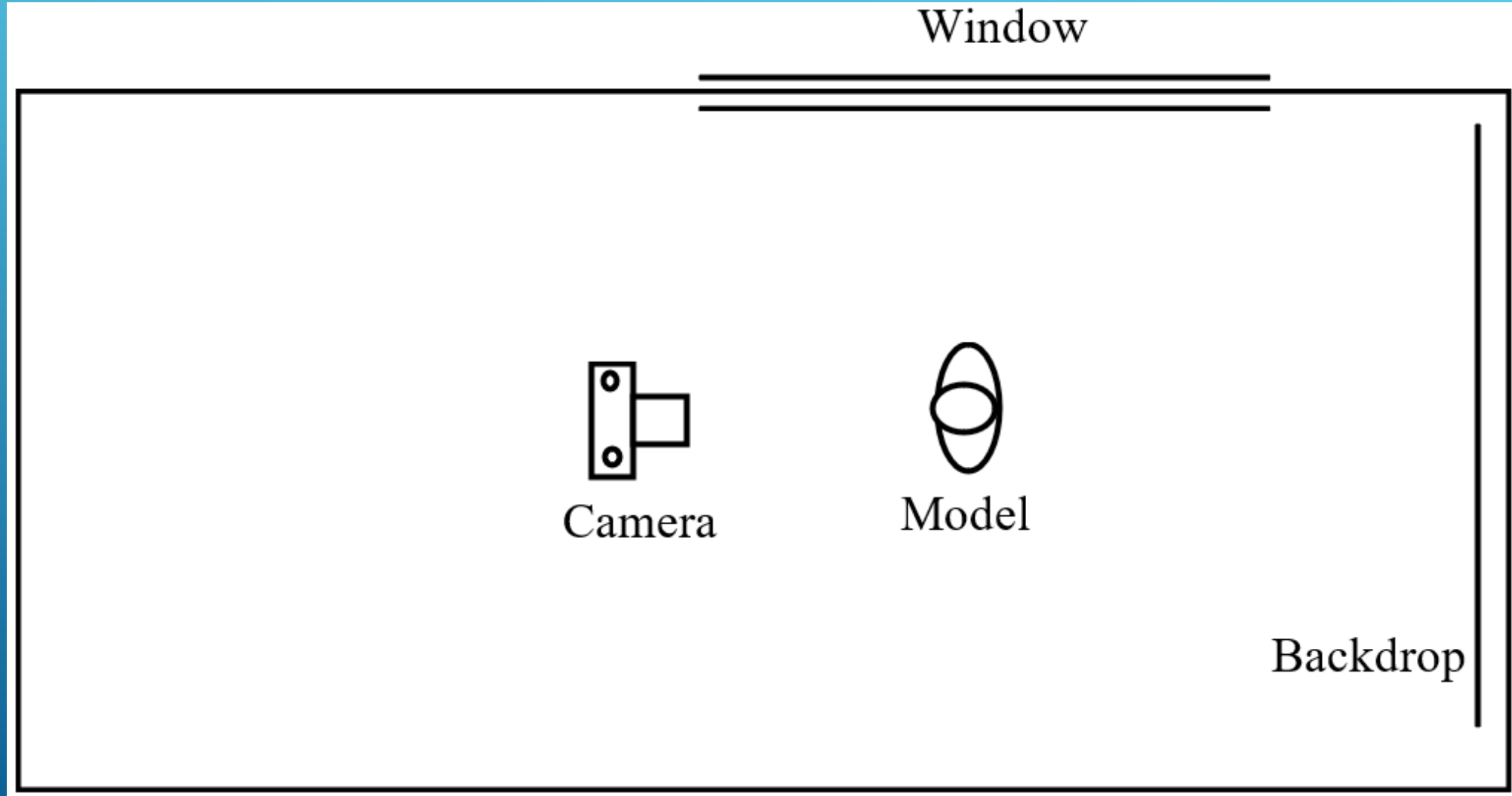
# AVAILABLE LIGHT 2

- Model 50 cm from window
- 1/40 sec @ f4.5
- ISO 1000
- 50 mm lens,
- White backdrop.
- WB on Cloudy
- AV mode





# AVAILABLE LIGHT 3

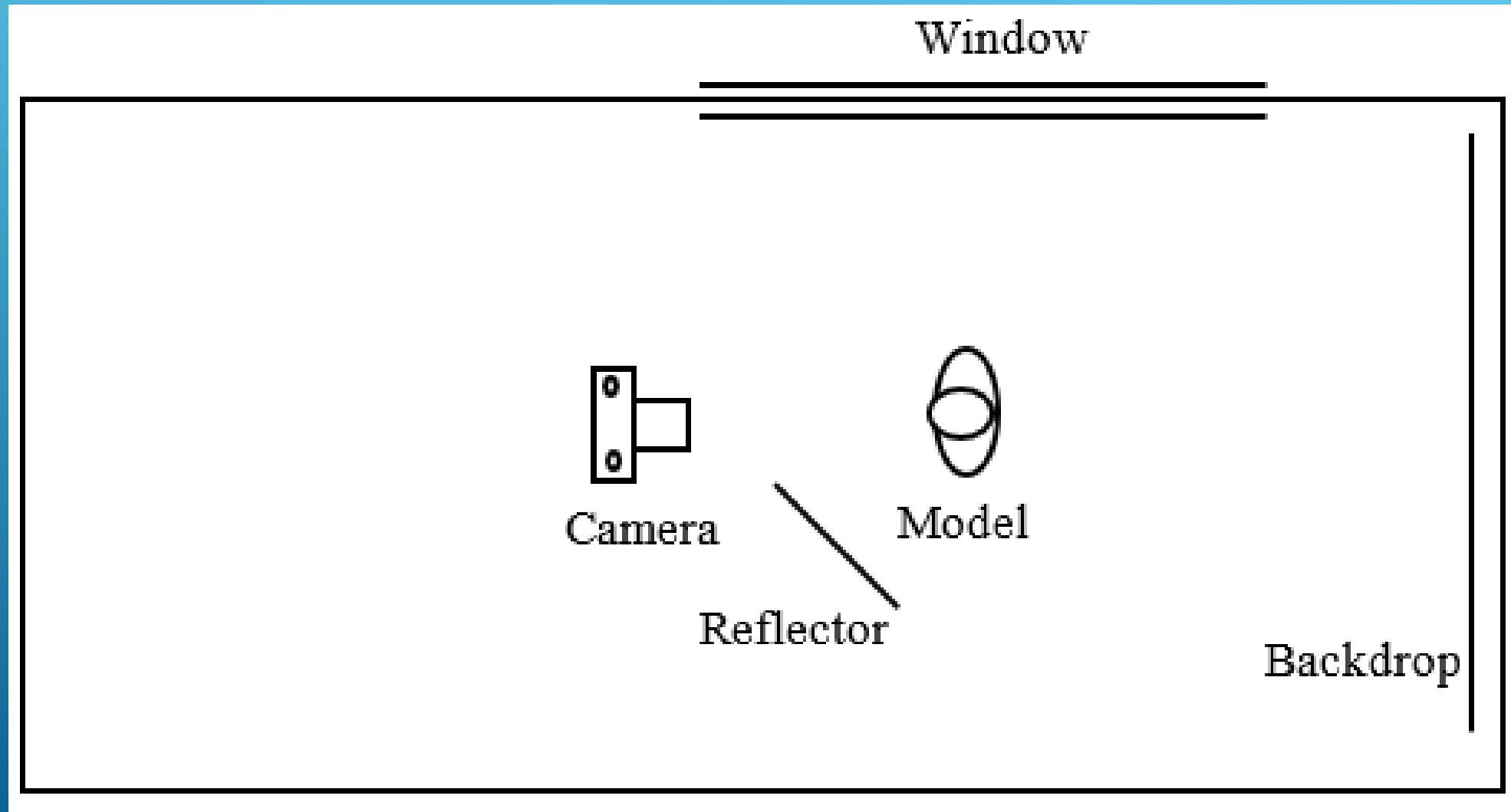


# AVAILABLE LIGHT 3

- Model 150 cm from window
- 1/20 sec @ f3.5
- ISO 1600
- 50 mm lens,
- White backdrop.
- WB on Cloudy
- AV mode



# AVAILABLE LIGHT 4



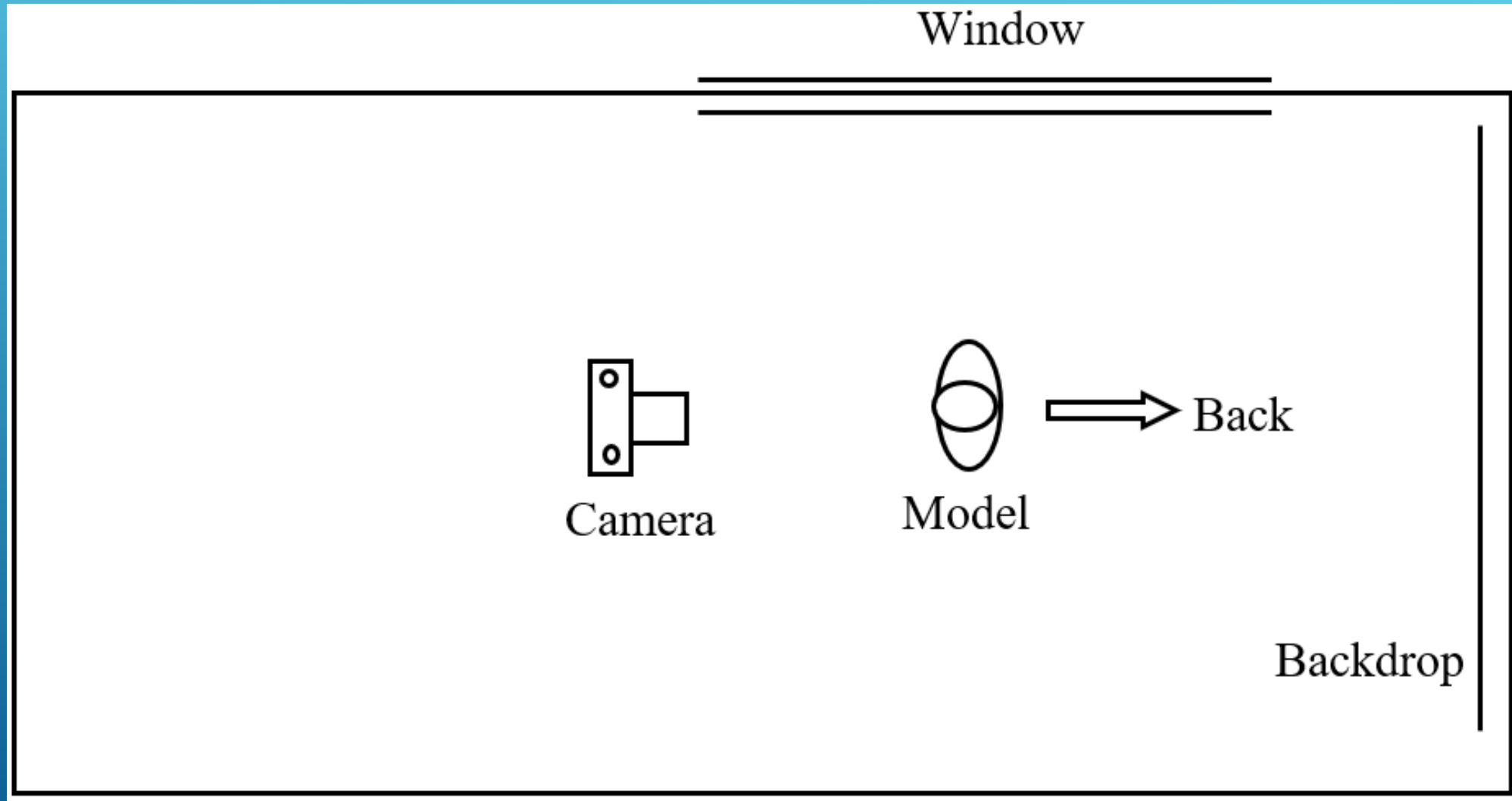
# AVAILABLE LIGHT 4

- Model 150 cm from window
- 1/30 @ f3.5
- ISO 1600
- 50 mm lens,
- White backdrop.
- WB on Cloudy
- AV mode





# AVAILABLE LIGHT 5

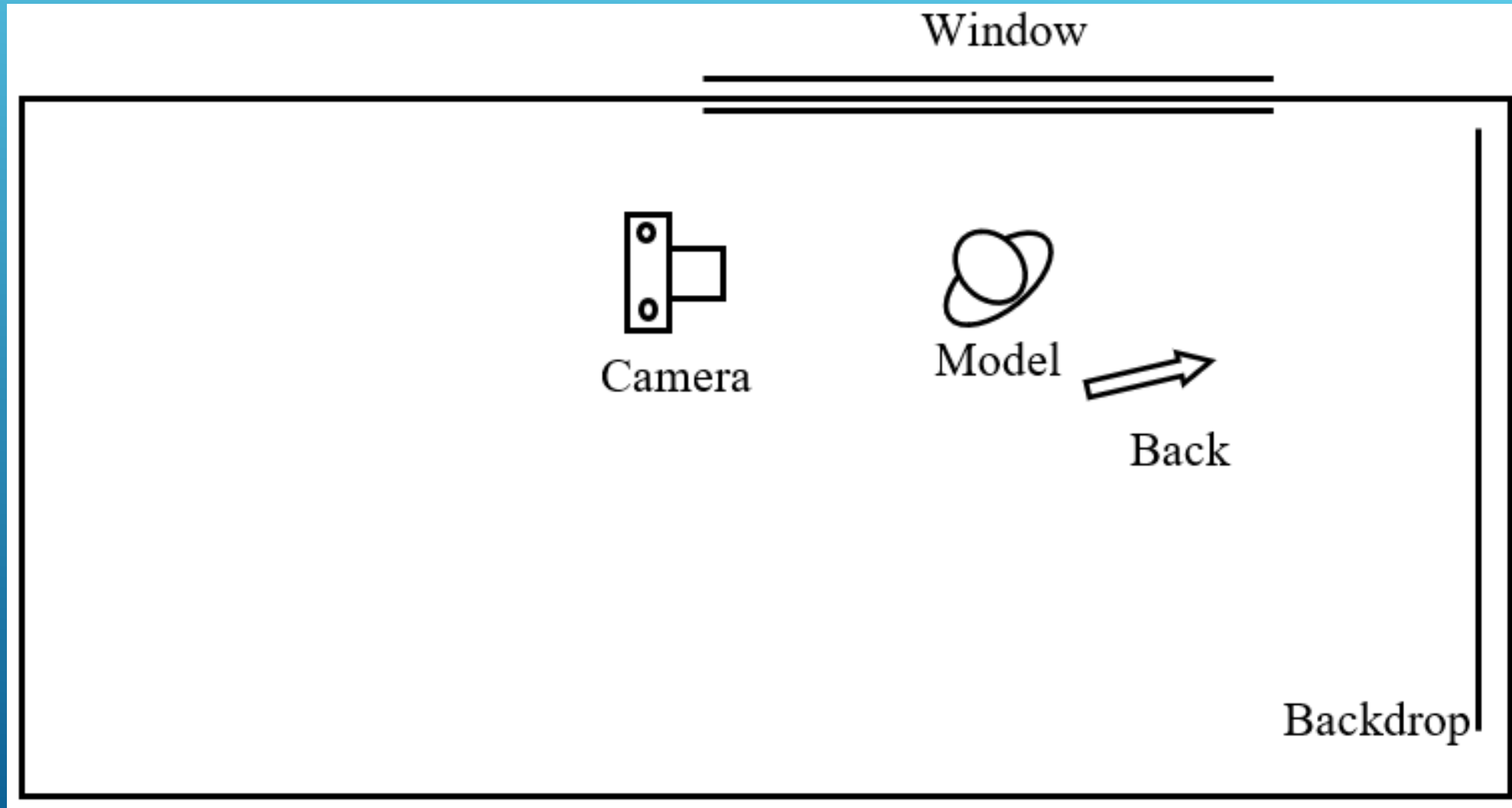


# AVAILABLE LIGHT 5

- Model 150 cm from window
- 1/30 @ f4.5
- ISO 1600
- 50 mm lens,
- White backdrop.
- WB on Tungsten
- Back light 500 W
- AV mode



# AVAILABLE LIGHT 6



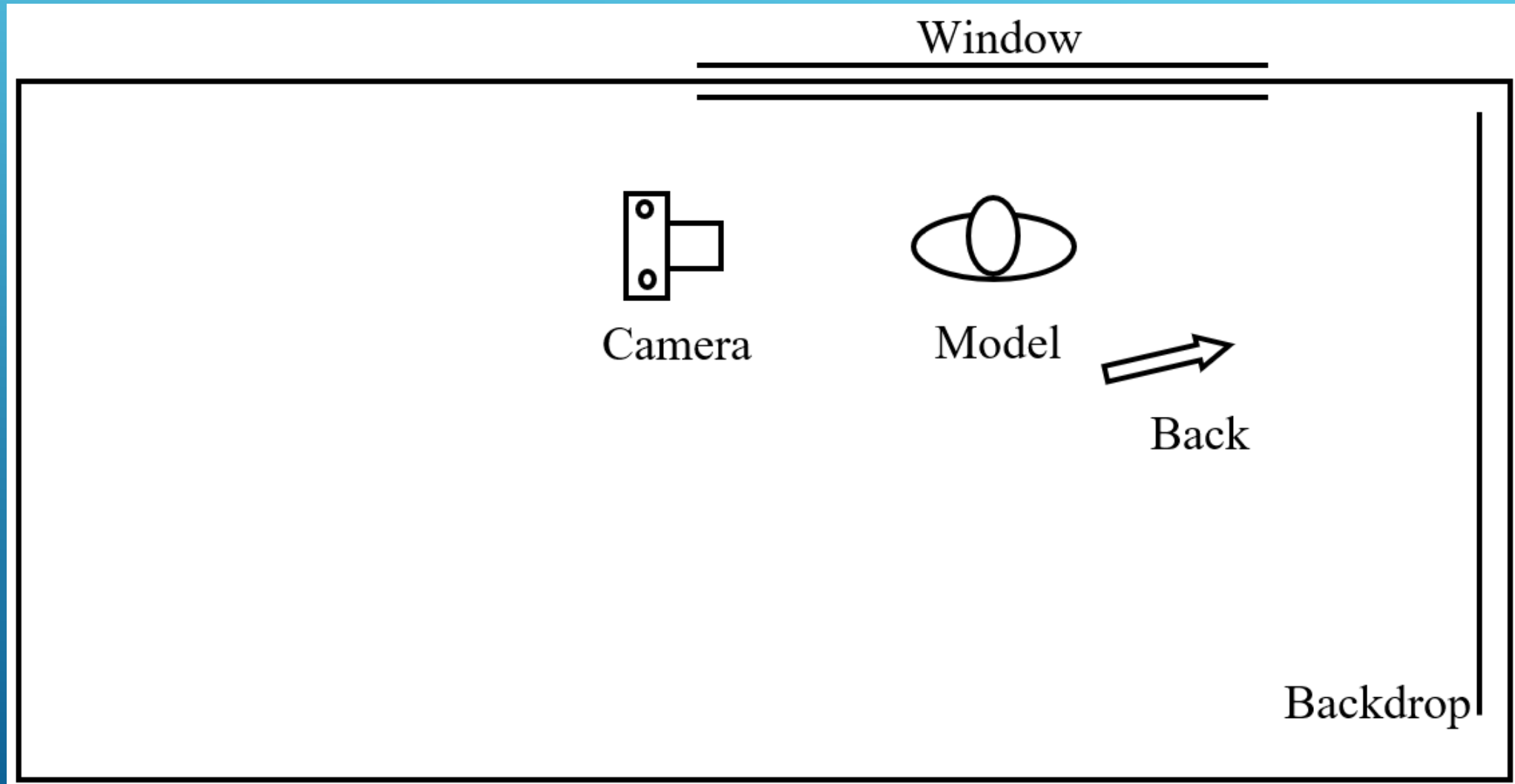
# AVAILABLE LIGHT 6

- Model 150 cm from window
- 1/30 @ f4.5
- ISO 1600
- 50 mm lens,
- White backdrop.
- WB on Tungsten
- Back Light 150 W
- AV mode



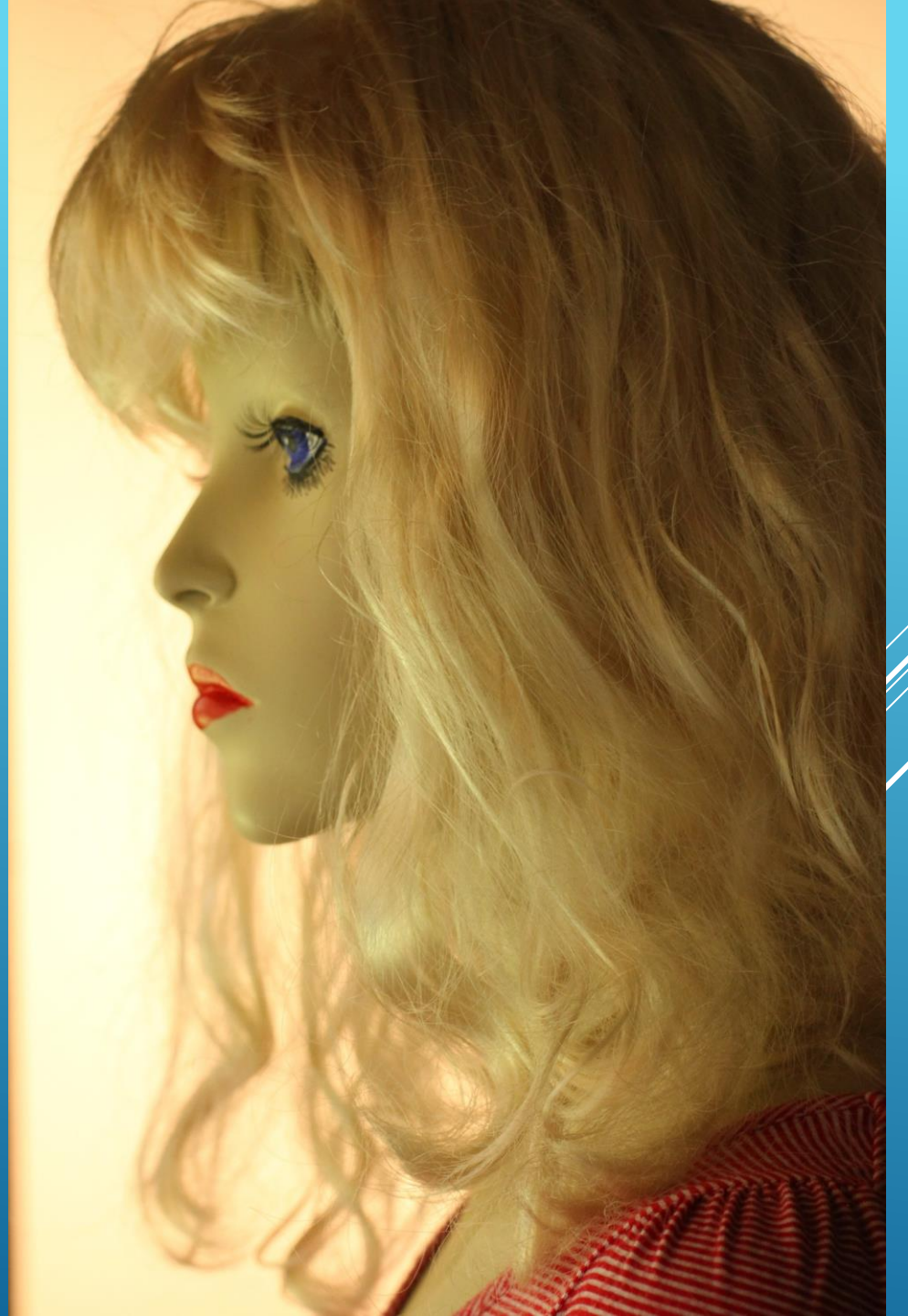


# AVAILABLE LIGHT 7



# AVAILABLE LIGHT 7

- Model 150 cm from window
- 1/30 @ f4.5
- ISO 1600
- 50 mm lens,
- White backdrop.
- WB on Tungsten
- Back Light 150 W
- AV mode



# COFFEE BREAK



# WHAT'S IN STORE ?

- Examples
  - Equipment
  - Models
  - Posing Models
  - Available light
  - Studio light
- 
- A series of several parallel white lines of varying thicknesses, slanted diagonally from the bottom-left towards the top-right, located on the right side of the slide.



# STUDIO LIGHT

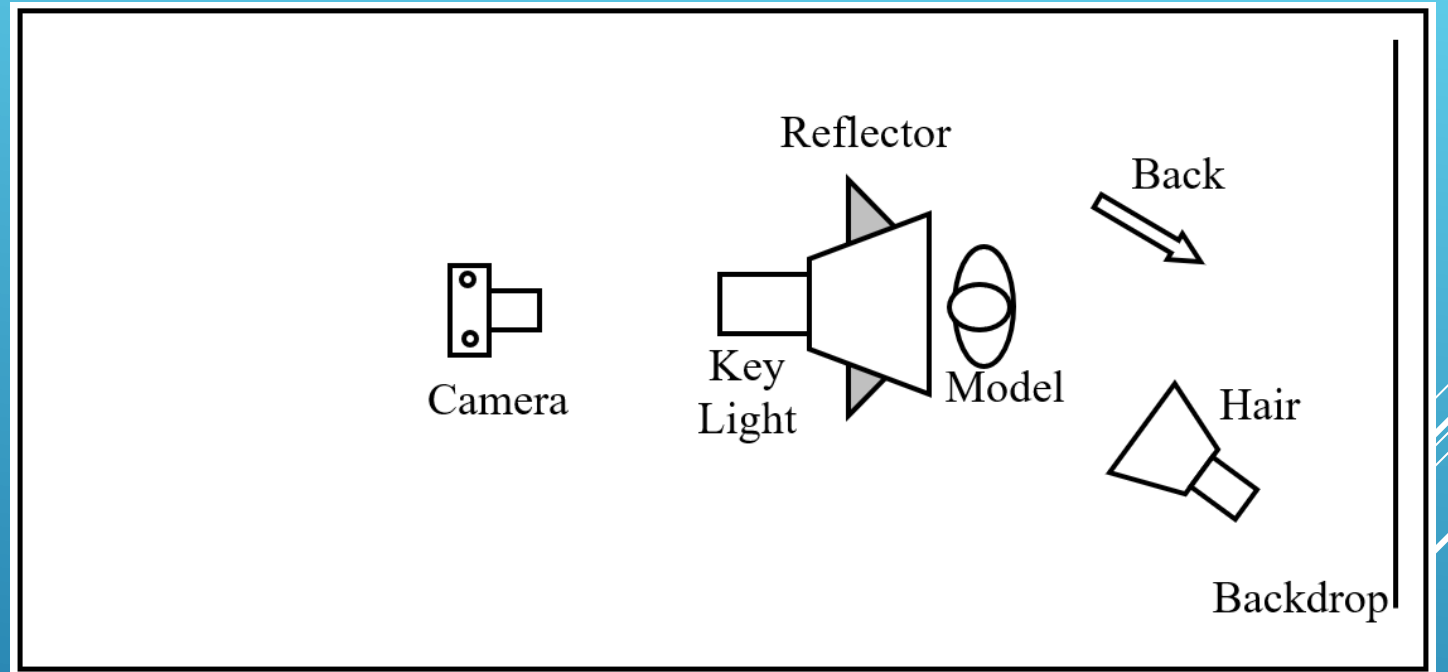
## Butterfly Lighting.

So called because of the butterfly shape of the highlight under the model's nose. Face will appear fatter.

Good for portraits of women with a normal oval face.

Not good for men as it accentuates the ears.

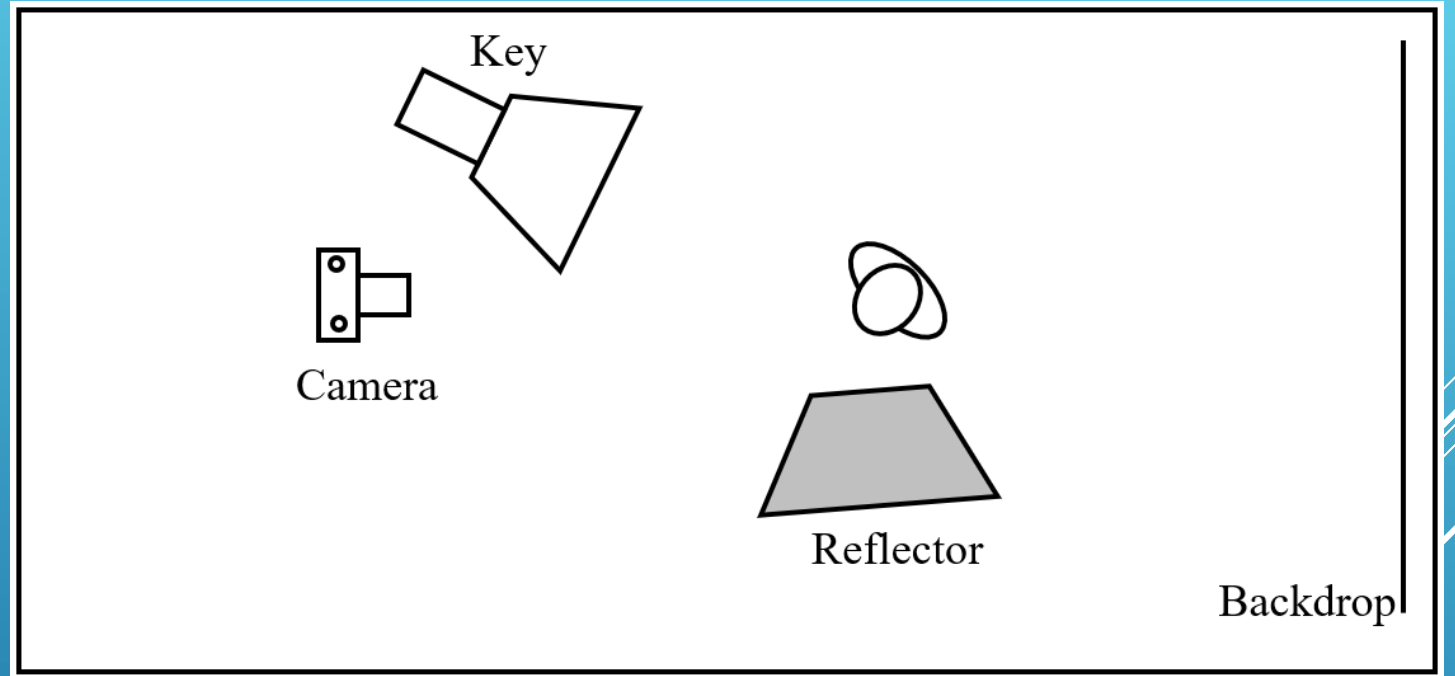
To start, a soft box is positioned high above and in front of the model.



# STUDIO LIGHT

## Broad Lighting.

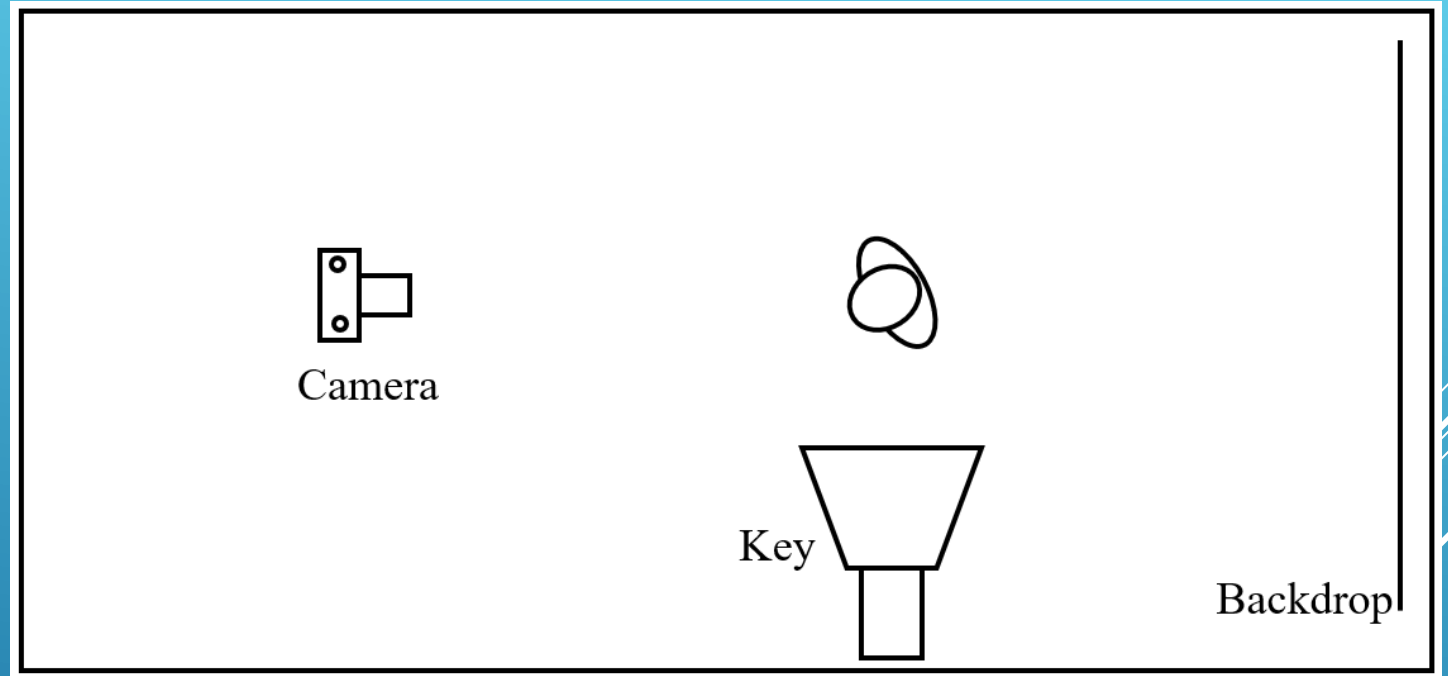
So called because it lights the broad side of the face. Narrow faces are broadened by this technique.



# STUDIO LIGHT

**Narrow Lighting.** (also called Short Lighting)

So called because only a narrow part of the face is directly lit. Good for making faces thinner.

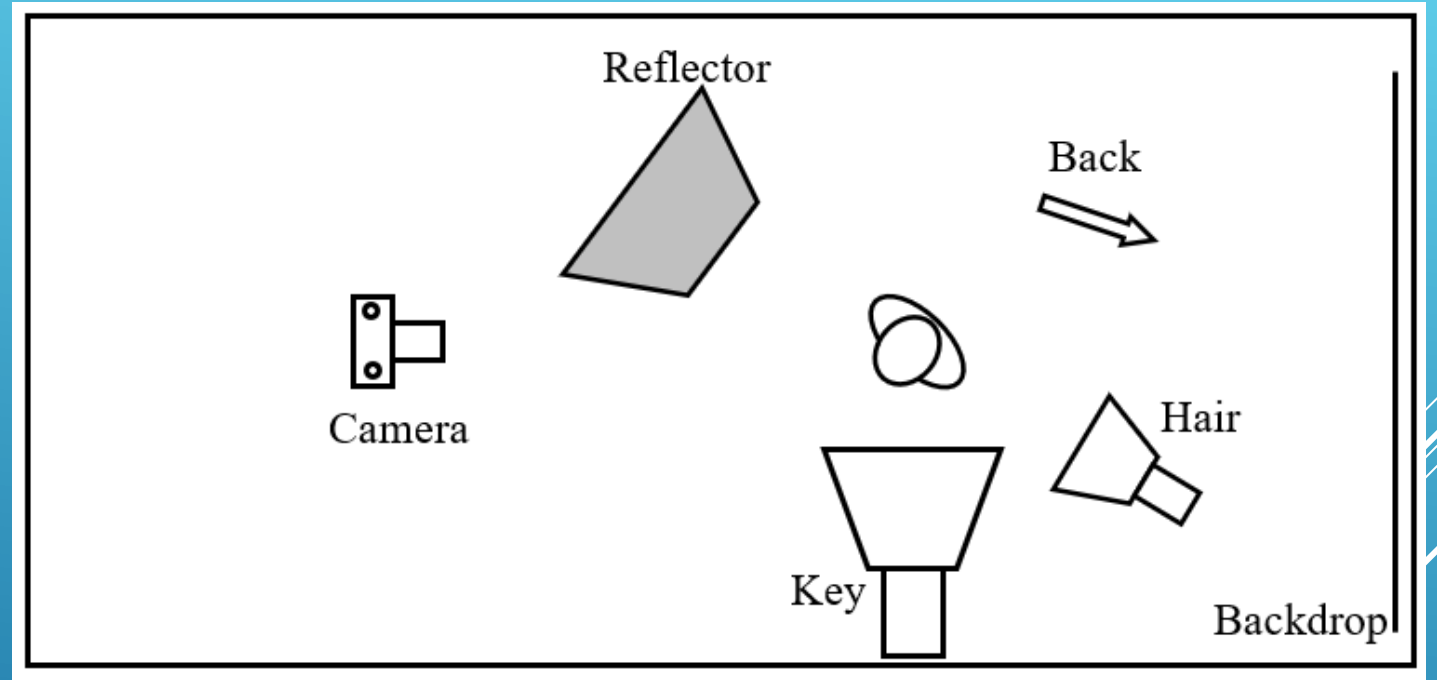


# STUDIO LIGHT

## 2/3 lighting.

Used for spotty or pitted skin as the lighting is flat.

Highlight in eyes can be distracting.

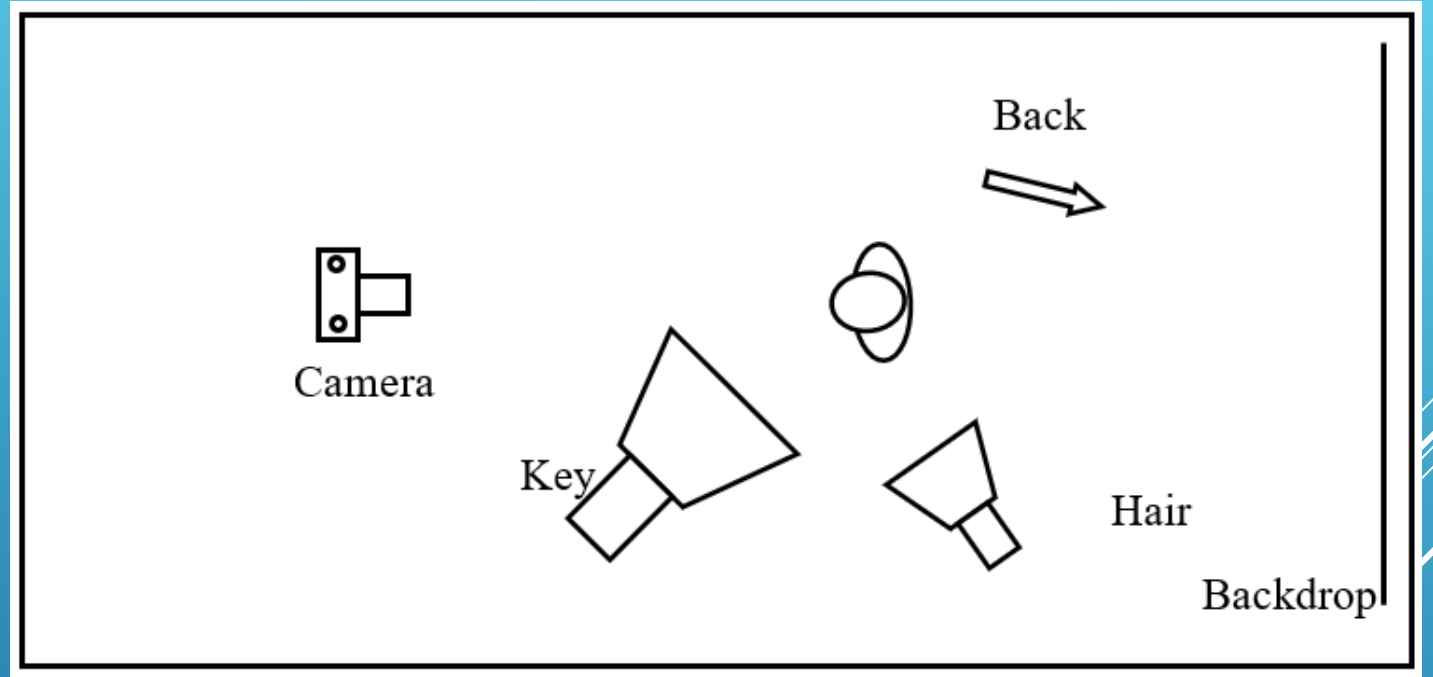




# STUDIO LIGHT

## 45 Degree lighting

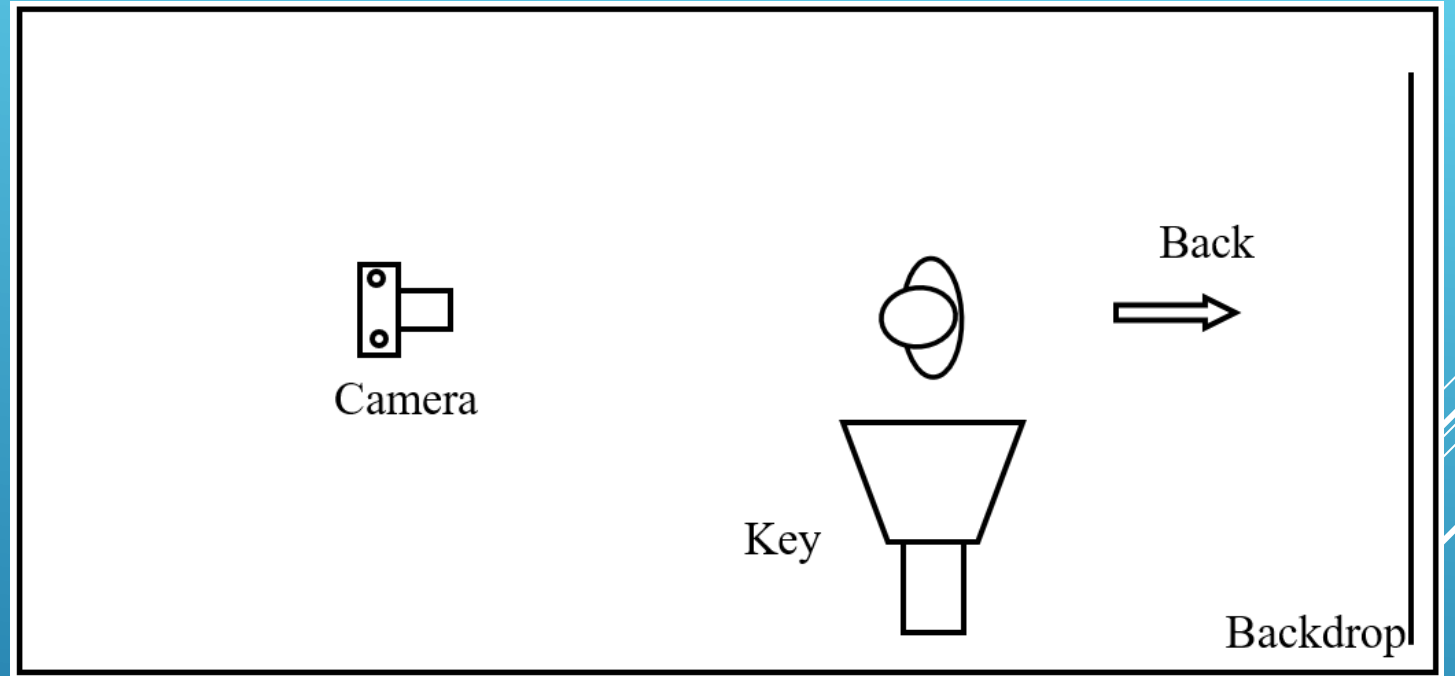
Provides a natural looking lighting result.



# STUDIO LIGHT

## Split lighting

Often used for male portraits.  
Can be dramatic. A reflector  
can be added to fill shadows if  
required.

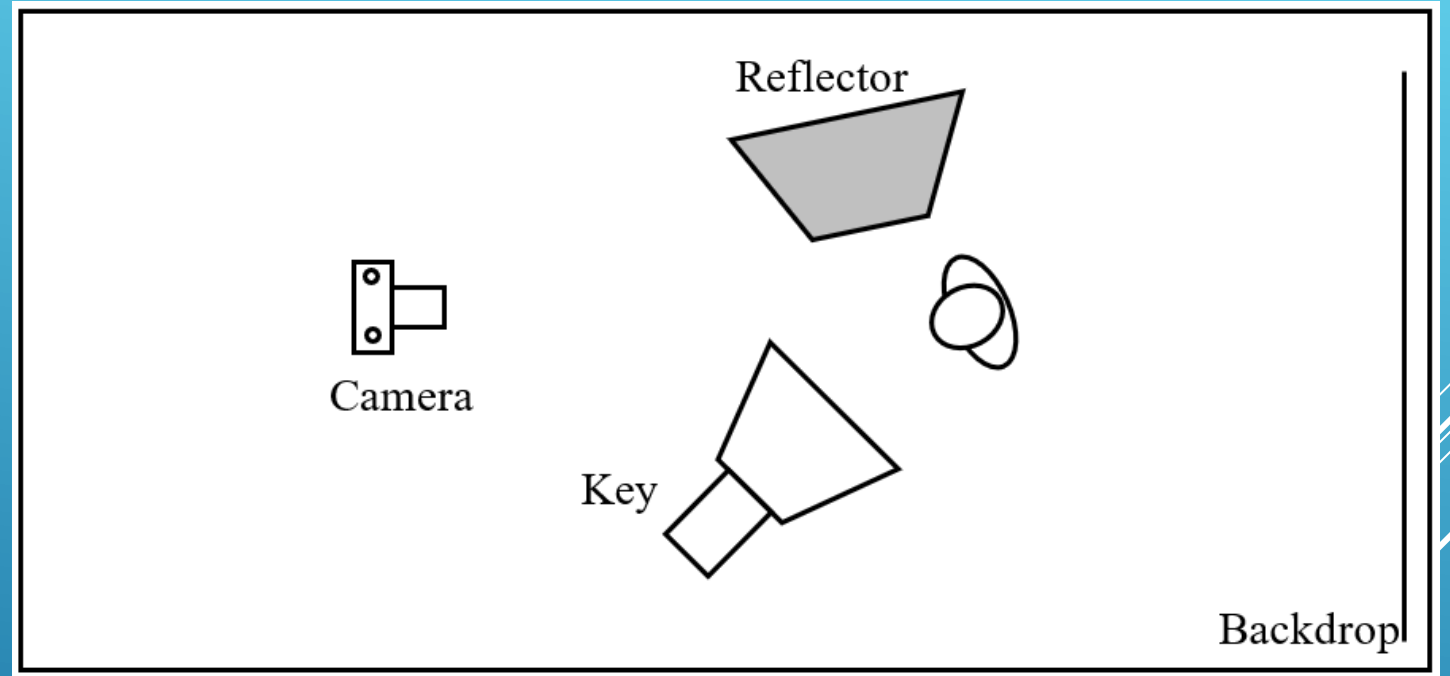


# STUDIO LIGHT

## High Key lighting

Best used with bright clothing and a bright background.

Exposure increased here to give a softer (pastel effect) light

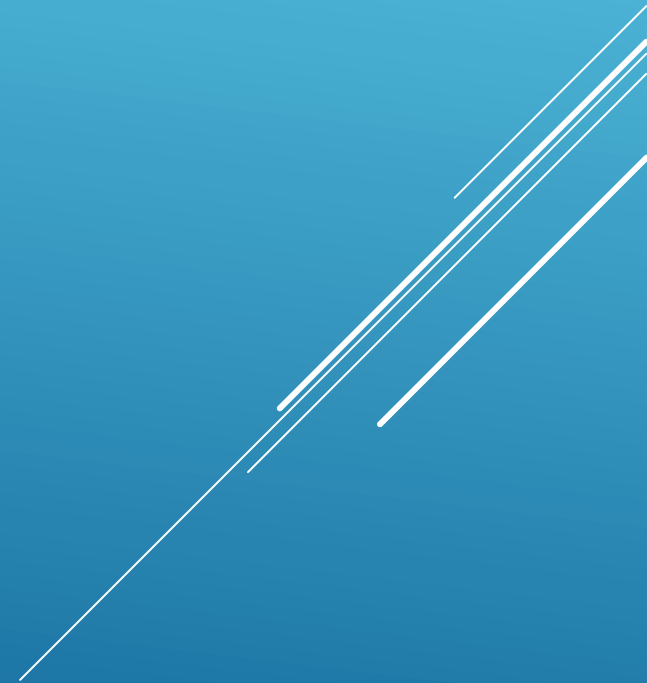


FINALLY

## To quote Ansel Adams ...

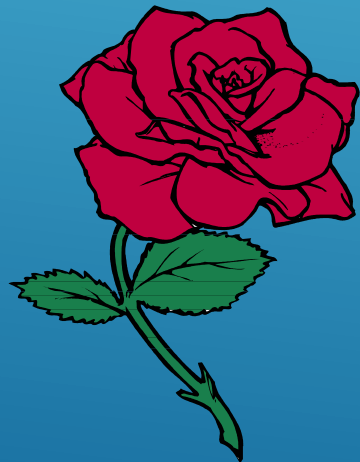
“The negative is the equivalent of the composers score, and the print is the performance”

i.e. Taking the shot is only the first part of the final result; post processing is what you do to deliver the rest.

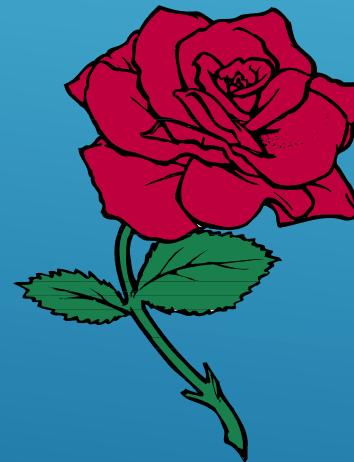




THE END



Thanks to Lara



QUESTIONS?

